



CHARTwell
BAYVIEW
retirement residence



making people's lives **BETTER**



Experience **Belleville**
by-the-bay retirement living
designed just for you.

PART OF OUR COMMUNITY SINCE 1988

Located in the lovely city of Belleville, Chartwell Bayview is an intimate, traditional retirement residence offering independent supportive living services that allow you to comfortably age in place. Conveniently located on Dundas Street, our home is close to everything Belleville has to offer, including an abundance of services and amenities within walking and driving distance—with local restaurants and retail stores right across the

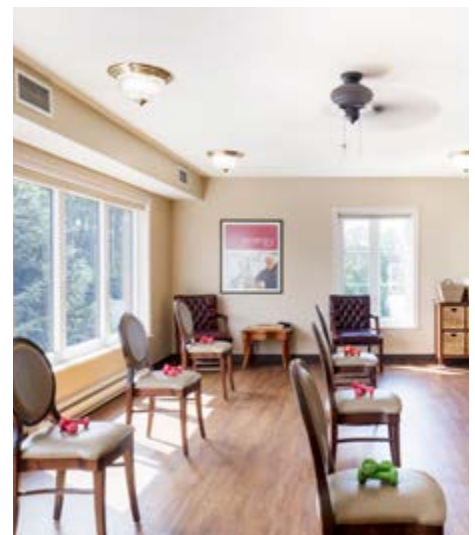
street—making running errands effortless. We are also conveniently located near bustling downtown Belleville, with its interesting mix of specialty stores, eateries, and attractions, such as concerts by the Quinte Symphony and live theatre at the Pinnacle Playhouse. If you're looking for outdoor pursuits, you can stroll along the waterfront trail of West Zwick's Island Park for breathtaking views of the Bay of Quinte.

OUR UNIQUE LIFESTYLE

At Chartwell Bayview, you can rest easy knowing that you live in a safe, worry-free setting where services and care adapt to your unique needs. In addition to delicious dining, housekeeping, flexible care services and transportation to appointments, we provide a range of engaging recreational experiences designed to keep you active and entertained. Here, you can choose from a selection of well-appointed suites that come in large and bright studio and one-bedroom suites featuring kitchenettes.

We invite you to enjoy our variety of modern on-site amenities, including a lively bistro, fitness centre, hair salon, games room, ice cream parlour, chapel, private dining room, library and more. Don't be surprised if you find yourself enjoying some fresh air in our tree-lined outdoor space with walking paths, listening to a live musical performance, playing billiards, or joining a book club. The choice is yours!

Explore our Living at Chartwell brochure to learn more about dining, lifestyle activities and personalized care services.



FACTS & FEATURES



IN THE NEIGHBOURHOOD

- Shopping
- Hospital
- Restaurants
- Parks
- Places of worship
- Medical clinics
- Pharmacy
- Community centres
- Casino

ACTIVITIES

- LiveNow program
- Day trips*
- Exercise
- Social and recreational programs
- Live entertainment
- Billiards
- Piano
- Guest speakers
- Shuffleboard

DINING SERVICES

- Diversified menu
- À la carte menu
- Themed dinners*
- Meals for guests*
- Catering*
- Freshly prepared snacks
- Ice cream parlour

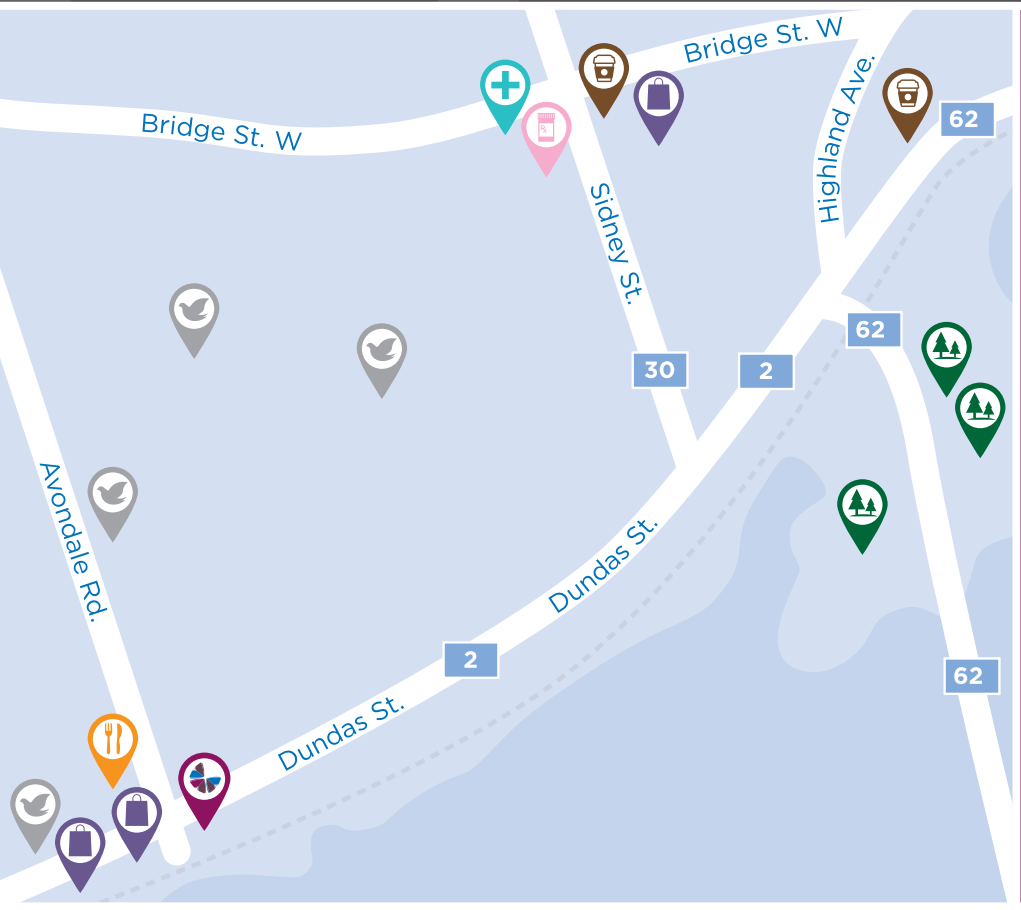
CARE SERVICES

- Medication supervision/administration*
- Assistance with activities of daily living*
- Vitals monitored*
- On-call Nurse
- Care Assist Program
- Visiting Podiatrist*
- Blood pressure clinic*
- Lab services*

AMENITIES

- Dining room
- Private dining room
- Bistro/cafe
- Activity room
- Fitness room
- Movie theatre
- Library
- Lounge
- Walking paths

*Fee-for-service may apply.



-  Restaurant
-  Medical clinic
-  Pharmacy
-  Coffee shop
-  Shopping
-  Place of worship
-  Park

CHARTWELL BAYVIEW

435 Dundas Street West, Belleville, ON K8P 1B6 • **613-689-9984**