



**CHARTwell**  
BOWMANVILLE  
CREEK  
retirement residence



making people's lives BETTER



“Enjoy your retirement years to the fullest in **historic downtown Bowmanville.**”

## PART OF OUR COMMUNITY SINCE 2017

Located in quaint, historic downtown Bowmanville, Chartwell Bowmanville Creek is a modern retirement residence offering a fulfilling lifestyle and independent supportive living and assisted living services that allow you to comfortably age in place. Founded on a high standard of care and a desire to make a difference in your life, we're well known for our quality services and superb amenities. We are also pet-friendly!

Centrally located just off Bowmanville's main street, our desirable location is within close

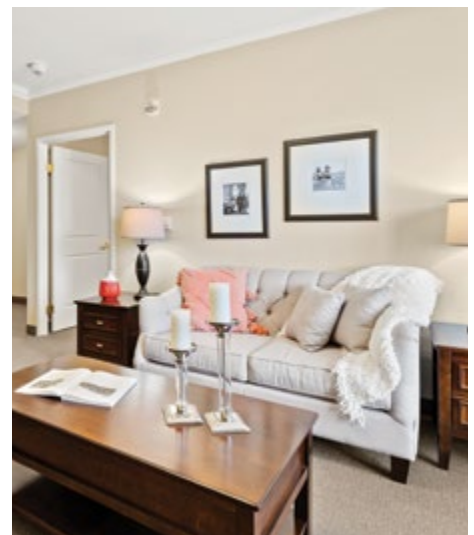
walking and driving distance of many convenient amenities and services: retail shopping, restaurants, grocery stores, banks, liquor stores, coffee shops, places of worship and Lakeridge Health Hospital. We are also one block north of historic downtown Bowmanville, with its interesting mix of specialty stores, eateries, and attractions. If you're looking for outdoor pursuits, we're near Rotary Park, where you can enjoy summer concerts and access to walking trails along Bowmanville Creek.

## OUR UNIQUE LIFESTYLE

At Chartwell Bowmanville Creek, you can rest easy knowing that you live in a safe, worry-free setting where services and care adapt to your unique needs. In addition to delicious dining, weekly housekeeping and linen service, flexible care services and transportation to appointments, we provide a range of engaging recreational experiences designed to keep you engaged, active and entertained.

In addition, you can choose from a selection of well-appointed suites that come in large and bright studios to two-bedroom suites, all featuring kitchenettes. We invite you to enjoy our variety of modern on-site amenities, including a heated indoor pool, fully equipped fitness centre, movie theatre, hair salon, a lovely bistro where coffee, tea and snacks are served, and much more. Whatever your interests, you choose how each day is based on how you want to live in your retirement years.

**Explore our Living at Chartwell brochure to learn more about dining, lifestyle activities and personalized care services.**



# FACTS & FEATURES



## IN THE NEIGHBOURHOOD

- Grocery stores
- Pharmacies
- Medical clinics
- Restaurants
- Hospital
- Coffee shops
- Banks
- Shopping
- Port Darlington Marina

## ACTIVITIES

- LiveNow program
- Day trips\*
- Guest speakers
- Social and recreational programs
- Exercise
- Live entertainment
- Crafts
- Gardening
- Aquafit

## DINING SERVICES

- Diversified menu
- À la carte menu
- Flexible dining times
- Themed dinners\*
- Meals for guests\*
- Freshly-prepared snacks
- Maître D'
- Wine service\*

## CARE SERVICES

- Medication supervision/administration\*
- Assistance with activities of daily living\*
- Care Assist Program
- Visiting Physician\*
- On-site Nurse
- CareRx Pharmacy
- Lab services\*
- Blood pressure clinic\*

## AMENITIES

- Dining room
- Private dining room
- Country kitchen
- Bistro/cafe
- Pub
- Movie theatre
- Activity room
- Fitness room
- Pool

\*Fee-for-service may apply.



-  Grocery store
-  Hospital
-  Pharmacy
-  Medical clinic
-  Restaurant
-  Coffee shop
-  Place of worship
-  Shopping

**CHARTWELL BOWMANVILLE CREEK**

105 Queen Street, Bowmanville, ON L1C 0T3 • 289-223-4935