



CHARTwell
GEORGIAN
retirement residence



making people's lives **BETTER**



Experience beautiful **green space, picturesque views** and **warm service** in the heart of **Dundas Valley.**

PART OF OUR LOCAL COMMUNITY SINCE 1995

Chartwell Georgian sits in the heart of Dundas, a charming community tucked into the base of the Niagara Escarpment. With Georgian-inspired architecture that adds to our inviting curb appeal, our retirement residence shares the neighbourhood with schools, parks and many convenient local amenities. In fact, many residents choose to live with us because of the proximity to children and grandchildren in our family-friendly community.

When you walk through our doors, you will be embraced by the welcoming, inclusive and warm feeling of our home. Traditional décor and furnishings, large windows with nature views, conversation and laughter shared between residents and staff—all these things add to the comfortable, at-home feeling at Chartwell Georgian. We're dedicated to promoting your health, happiness, and peace of mind so you can enjoy the fulfilling retirement years you deserve.

OUR UNIQUE LIFESTYLE

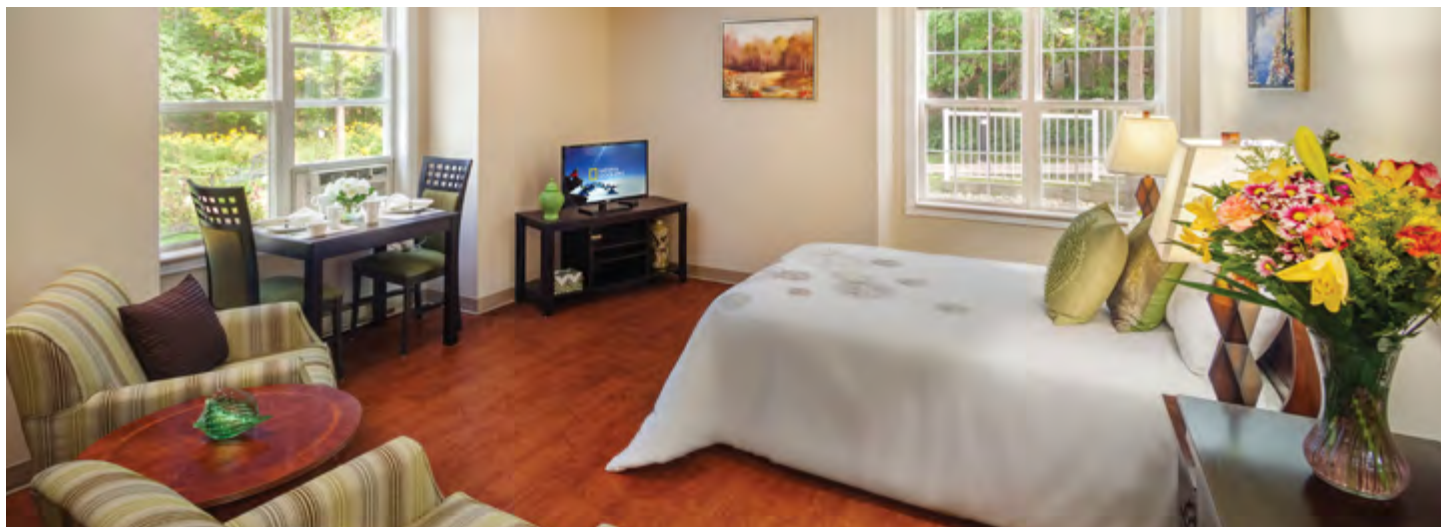
At Chartwell Georgian, we offer an **independent supportive living** lifestyle for seniors looking for convenient services like dining, housekeeping and laundry, optional care support and enriching social and leisure experiences. You can choose from comfortable studios and one-bedroom suites, all with unique views of our manicured grounds, mature trees and walking paths.

Here, you are empowered to design what everyday life looks like. Our on-site amenities act as an extension of your living space, where you may find yourself enjoying nature's beauty alongside walking club members in our lush courtyard, chatting with friends over a wholesome meal in our light-filled dining room, getting your hair done in our salon, or simply cozied up with a cup of tea and a good book by the fireplace in our lounge.

Explore our Living at Chartwell brochure to learn more about dining, lifestyle activities and personalized care services.



FACTS & FEATURES



IN THE NEIGHBOURHOOD

- Grocery stores
- Pharmacies
- Transit
- Places of worship
- Parks
- Community centres/ sports parks
- Museums
- Royal Canadian Legion
- Art galleries

ACTIVITIES

- LiveNow program
- Educational activities
- Social and recreational programs
- Day trips*
- Exercise
- Live entertainment
- Live music events*
- Gardening
- Yoga

DINING SERVICES

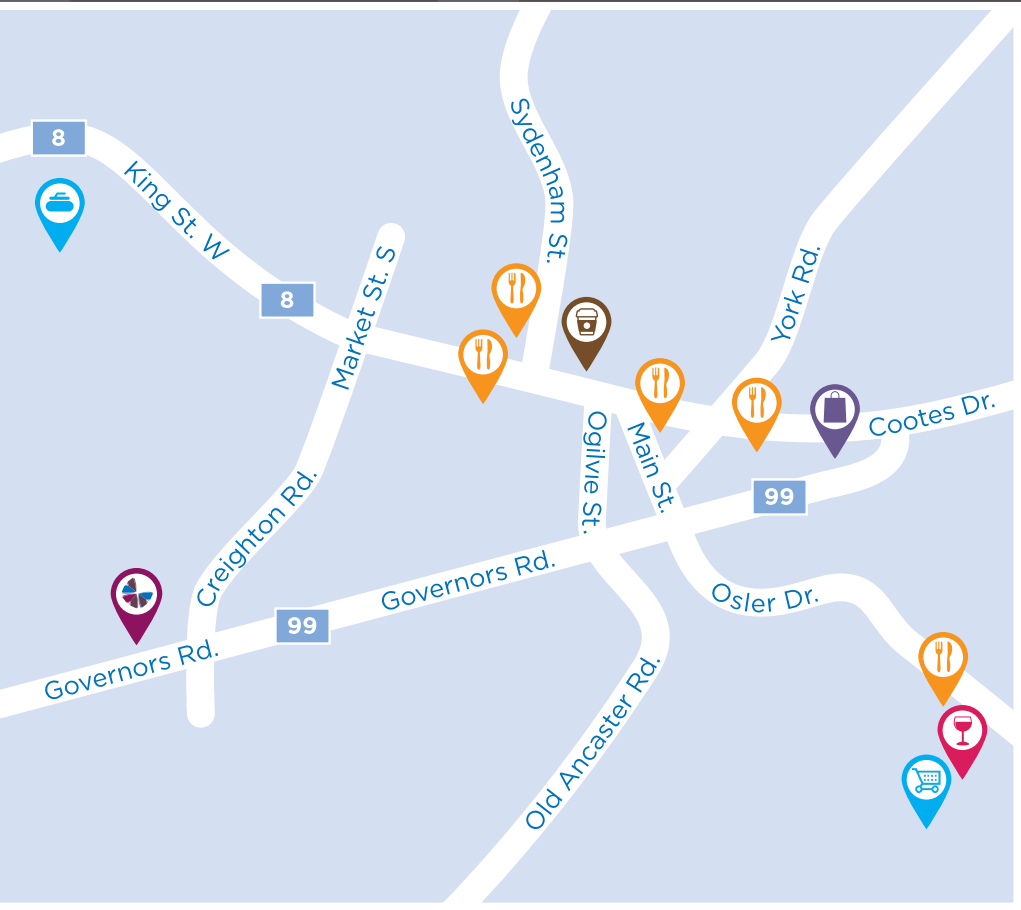
- Diversified menu
- À la carte menu
- Open seating dining
- Special diets accommodated
- Themed dinner*
- Continental breakfast
- Meals for guests*
- Family dinner
- Freshly prepared snacks







CARE SERVICES

- Medication supervision/ administration*
- Assistance with activities of daily living*
- On-site Nurse
- Lab services*
- Physician visits*
- Companionship*
- Oxygen service*
- Therapeutic bath

AMENITIES

- Dining room
- Private dining room
- Bistro
- Activity room
- Multi-functional room
- Walking paths
- Outdoor greenspace
- Convenience store*
- Wellness centre



-  Shopping
-  Restaurant
-  Grocery store
-  Liquor store
-  Coffee shop
-  Curling club

CHARTWELL GEORGIAN
255 Governor's Road, Dundas, ON L9H 3K4 • **289-858-2973**