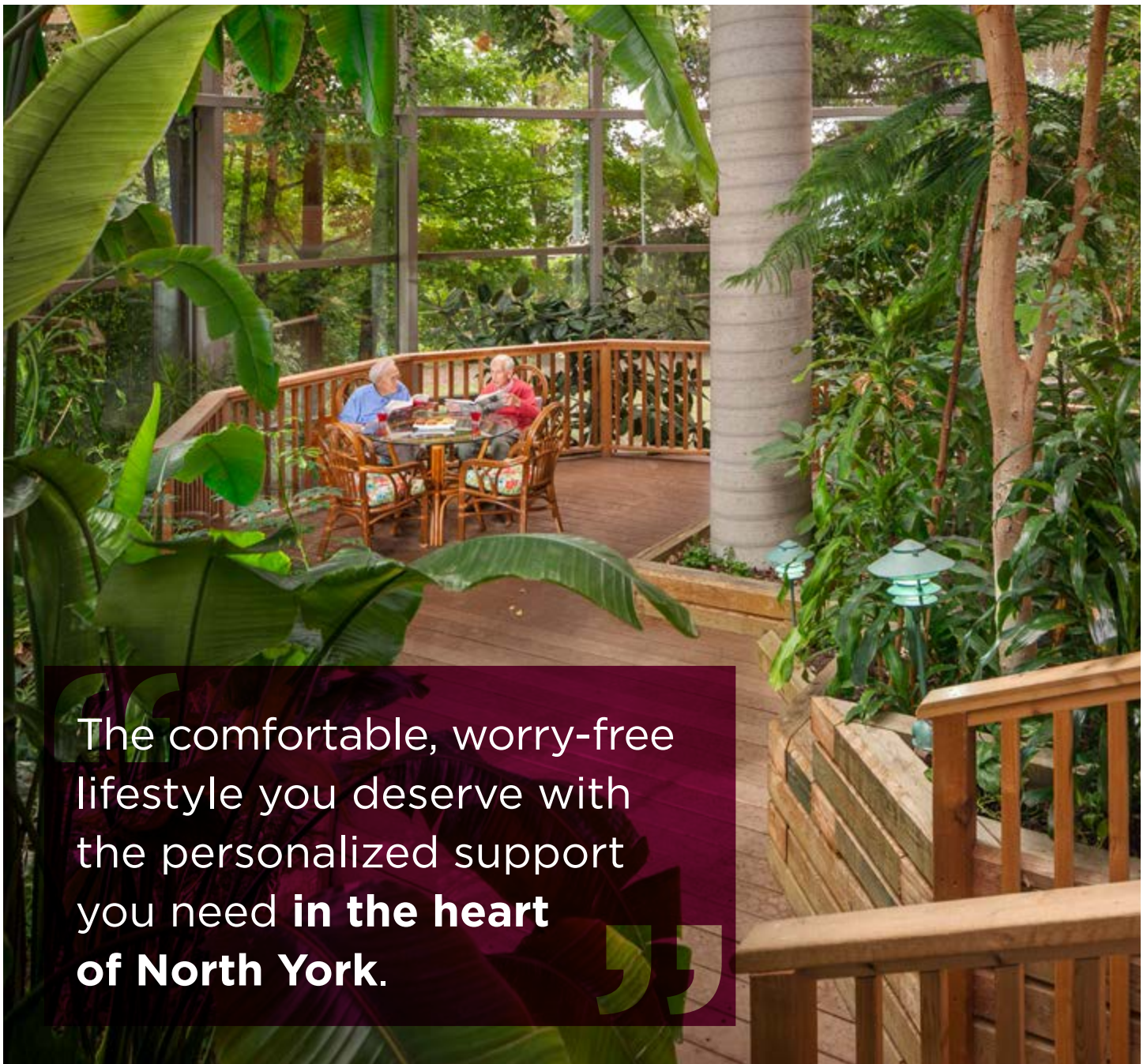




CHARTwell  
GIBSON  
retirement residence



making people's lives BETTER



The comfortable, worry-free lifestyle you deserve with the personalized support you need **in the heart of North York.**

## PART OF OUR LOCAL COMMUNITY SINCE 1982

Chartwell Gibson Retirement Residence in an intimate continuum of care setting designed to support your independence, comfort and wellness with services personalized to you. Our friendly and diverse group of residents, staff and visitors makes us feel like a true family home, where you can feel the warmth and the depth of our trusted relationships with one another.

In the Leslie-Steeles neighbourhood of North York— not far from North York General Hospital—you'll

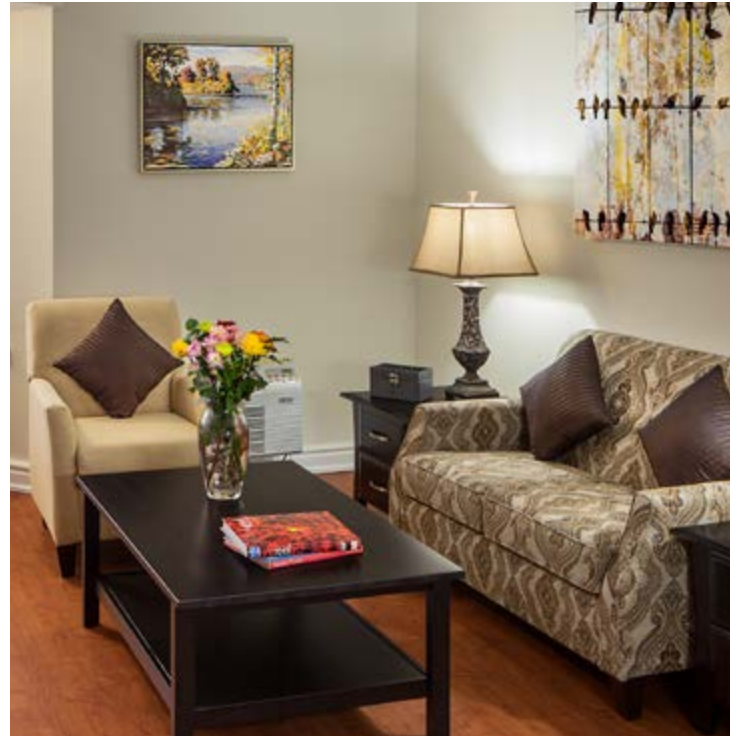
find our location is a green oasis in a bustling city centre. Many of our residents are avid gardeners, and therefore love our serene outdoor space, featuring landscaped gardens, walking paths and cozy patio furniture. Shopping, running errands or going out for lunch with family is also made easy in our well-serviced community, where you'll find nearby malls like Centerpoint Mall, Bayview Village, Fairview Mall, and the Shops at Don Mills.

## OUR UNIQUE LIFESTYLE

When you walk through our doors, you'll be in awe of our soaring five-storey atrium, with its lush plants and floor-to-ceiling windows allowing in an abundance of light. Here, we offer a variety of well-appointed suites, available in spacious studio and one-bedroom layouts, many with great views of neighbouring Bayview Golf & Country Club and Duncan Creek Trail.

Our caring, trained staff are here to support how you want to live in your retirement years with services and care—delivered in the privacy of your suite—that reflect your unique needs and preferences. Whether you'd benefit from medication management services, assistance with your morning or evening routine, or other specialized care, we are equipped to help you comfortably age in place for your peace of mind. In addition, you will benefit from delicious and nutritious meals, housekeeping, and an array of optional life enrichment experiences, fitness classes and outings.

**Explore our Living at Chartwell brochure to learn more about dining, lifestyle activities and personalized care services.**



# FACTS & FEATURES



## IN THE NEIGHBOURHOOD

- Pharmacies
- Shopping
- Hospital
- Medical clinics
- Banks
- Transit
- Places of worship
- Dentists
- LTC Long term care

## ACTIVITIES

- Cultural activities
- Live entertainment
- Social and recreational programs
- Exercise
- Gardening
- Exhibitors\*
- Piano
- Day trips\*
- Shuffleboard

## DINING SERVICES

- Diversified menu
- À la carte menu
- Themed dinners\*
- Meals for guests\*
- Catering\*
- Family dinner
- Freshly-prepared snacks

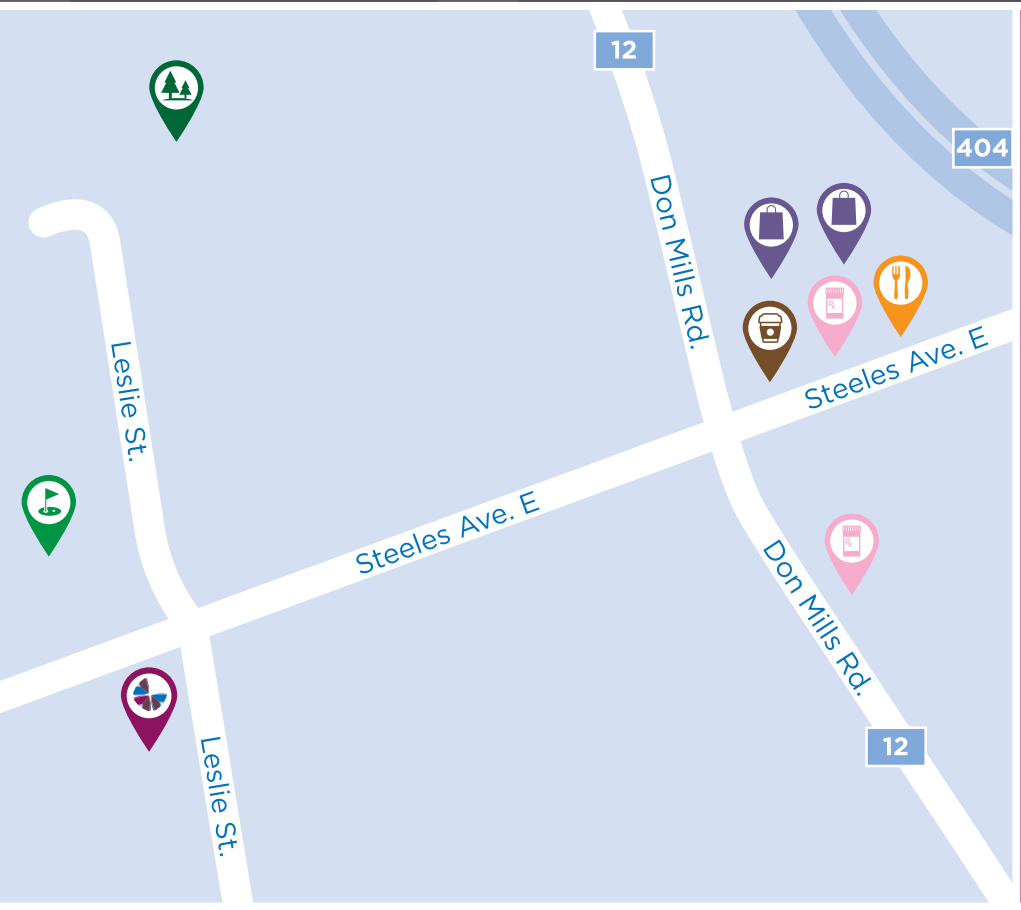
## CARE SERVICES







- Medication supervision/administration\*
- Audiology/hearing clinic\*
- Care Assist Program
- Assistance with activities of daily living\*
- Physiotherapy\*
- Visiting Optometrist\*
- Occupational therapy\*
- Visiting Physician\*
- On-site Nurse

## AMENITIES

- Dining room
- Private dining room
- Outdoor greenspace
- Country kitchen
- Activity room
- Fitness room
- Library
- Lounge
- Bistro/cafe

\*Fee-for-service may apply.



-  Shopping
-  Restaurant
-  Coffee shop
-  Pharmacy
-  Golf course
-  Park

**CHARTWELL GIBSON**

1955 Steeles Avenue East, North York ON M2H 3P1 • **647-547 1810**