



CHARTwell
SOUTHWIND
retirement residence



making people's lives BETTER



Retire in Sudbury's desirable south end with the **active and supportive lifestyle** you deserve.

PART OF OUR LOCAL COMMUNITY SINCE 2004

Chartwell Southwind Retirement Residence is a hidden gem tucked away in the city. Our retirement community is near Lake Nepahwin in Sudbury's south end and close to an abundance of convenient amenities, including shopping, restaurants, healthcare facilities, beaches and boardwalks. Located off the main road and surrounded by lush mature trees, we provide valuable independent supportive living services that promote your health, happiness and peace of mind.

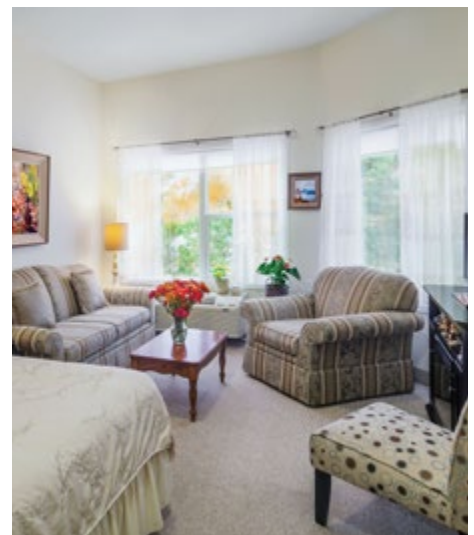
In addition to three delicious and nutritious daily meals, housekeeping and flexible care services that help you live well, we offer social, fitness and hobby experiences that provide a sense of purpose, keep you active, and entertain. Here, you can participate in a variety of clubs that give you a reason to socialize, build your own garden, try your hand at a creative project, or even give back to our local community.

OUR UNIQUE LIFESTYLE

Our desirable south end location in a growing community comes with a host of benefits, chief among them our lovely natural surroundings on a protected green belt. The living experience of our residents is elevated thanks to landscaped walking paths around the building, an outdoor patio that serves as a gathering place, and gardens where you can plant flowers or vegetables. You'll also love all our wildlife sightings—from birds and rabbits to fox!

Indoors, you'll find our open-concept atmosphere is equally as tranquil. You'll love our high ceilings and cathedral windows that allow in swathes of light, as well as our cozy fireplace lounge with nature views. We also offer a variety of well-appointed suites in a selection of layouts and sizes—including studio, one- and two-bedroom suites—so you can find the perfect private accommodations for your lifestyle.

Explore our Living at Chartwell brochure to learn more about dining, lifestyle activities and personalized care services.



FACTS & FEATURES



IN THE NEIGHBOURHOOD

- Grocery stores
- Pharmacies
- Shopping
- Restaurants
- Hospital
- Banks
- Coffee shops
- Hotels
- Theatres

ACTIVITIES

- LiveNow program
- Social and recreational programs
- Day trips*
- Exercise
- Live entertainment
- Billiards
- Piano
- Crafts
- Pet visits

DINING SERVICES

- Diversified menu
- À la carte menu
- Themed dinner*
- Meals for guests*
- Freshly prepared snacks

CARE SERVICES









- Medication supervision/administration*
- Assistance with activities of daily living*
- On-call Nurse
- Pharmacy
- Occupational therapy*
- Vitals monitored*
- Oxygen service
- Lab services*

AMENITIES

- Dining room
- Bistro/cafe
- Country kitchen
- Activity room
- Fitness room
- TV room
- Library
- Lounge
- Walking paths

*Fee-for-service may apply.



-  Grocery store
-  Restaurant
-  Bank
-  Coffee shop
-  Pharmacy
-  Library
-  Place of worship
-  Golf course

CHARTWELL SOUTHWIND

1645 Paris Street, Sudbury, ON P3E 6L5 • 705-885-9643