



**CHARTwell**  
WILLOWDALE  
retirement residence



making people's lives BETTER<sup>®</sup>



In the heart of the  
**Ottawa Valley**, a welcoming  
and friendly residence  
offering a **social and  
supportive lifestyle.** ”

## PART OF THE LOCAL COMMUNITY SINCE 1988

Chartwell Willowdale Retirement Residence is tucked into the charming small town of Smiths Falls in Lanark County. Our quiet and leafy residential community is a short drive to a variety of local conveniences, including a shopping mall, pharmacies, restaurants and grocery and liquor stores—and don't forget the pretty walking paths and lush parks that wind around nearby Rideau Canal and our namesake, Smiths Falls. Our residents love our neighborhood for these reasons, plus many of their children and grandchildren also call the community home.

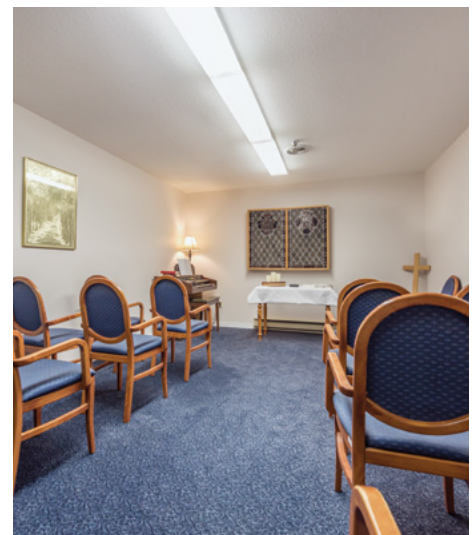
Our traditional senior living residence offers independent supportive living services—including delicious and nutritious meals, housekeeping and optional personal support—in comfortable studio, one-bedroom and one-bedroom with companion suites. Here, we deliver a personalized experience that leaves you feeling supported, engaged and fulfilled in your retirement years.

## OUR UNIQUE LIFESTYLE

Our small, inviting residence boasts a spacious single-floor bungalow layout and cozy atmosphere designed for easy mobility and socialization. You'll find our retirement community feels like a true family home from the moment you step through our doors, thanks to the friendships shared between our tight-knit group of residents and staff.

With a varied selection of amenities and experiences that speak to our residents' many interests, our retirement residence is a vibrant, welcoming space where both social and individual pursuits can flourish. Here, you can enjoy special celebrations in our dining room, exercise classes in our fitness room, pampering in our renovated hair salon and services in our chapel. Our residents are an active and lively group, and you may find yourself meeting new friends during Bingo, card tournaments, while crafting or puzzling, or perhaps while growing vegetables in our back garden!

**Explore our Living at Chartwell brochure to learn more about dining, lifestyle activities and personalized care services.**



# FACTS & FEATURES



## IN THE NEIGHBOURHOOD

- Grocery stores
- Pharmacies
- Shopping
- Restaurants
- Hospital
- Banks
- Places of worship
- Dentists
- Seniors centres

## ACTIVITIES

- LiveNow program
- Social and recreational programs
- Day trips\*
- Exercise
- Live entertainment
- Piano
- Book club
- Crafts
- Pet visits

## DINING SERVICES

- Flexible dining times
- Meals for guests\*
- Freshly prepared snacks

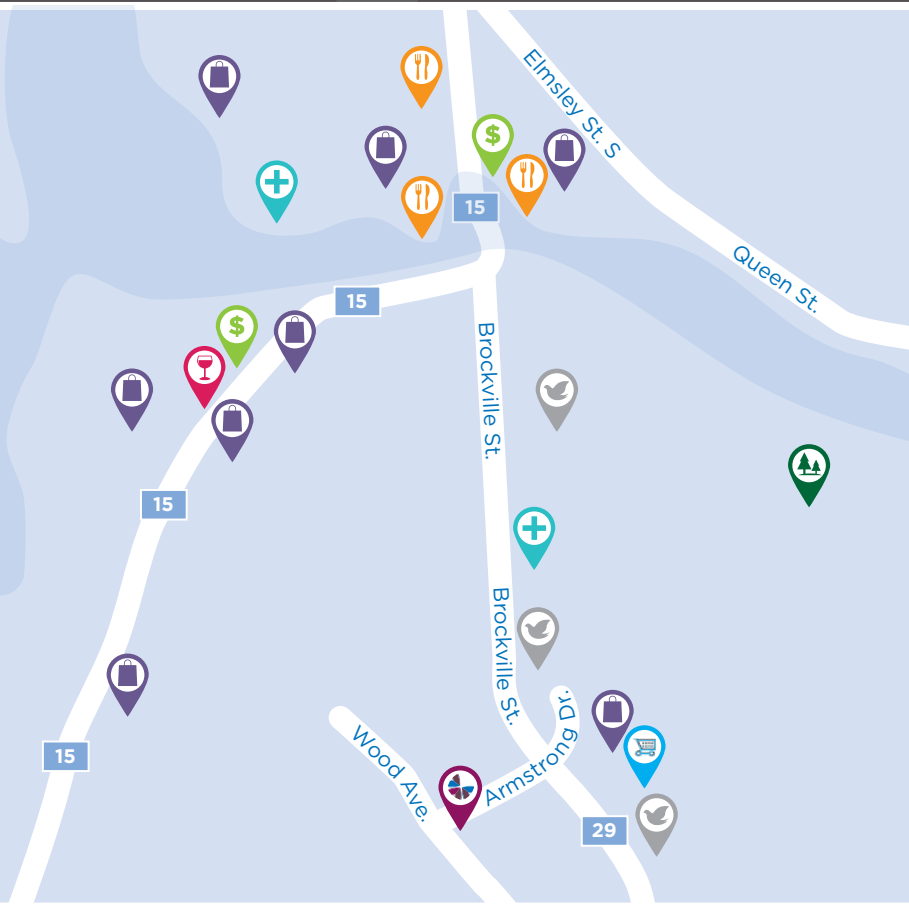
## CARE SERVICES









- Medication supervision/administration\*
- Assistance with activities of daily living
- On-call Nurse
- On-site Nurse
- Pharmacy
- Physician visits\*
- Audiology/hearing clinic\*
- Blood pressure clinic\*

## AMENITIES

- Dining room
- Country kitchen
- TV room
- Outdoor greenspace
- Chapel

\*Fee-for-service may apply.



-  Grocery store
-  Place of worship
-  Shopping
-  Medical clinic
-  Park
-  Bank
-  Restaurant
-  Liquor store

**CHARTWELL WILLOWDALE**

9 Armstrong Drive, Smiths Falls, ON K7A 5H7 • **613-706-2182**