



To view our complete selection of suite plans,  
book your personalized visit today.

## Sample Suite Plans

### 2 BEDROOM

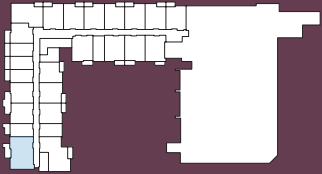
making people's lives **BETTER**

65 Livingston Road  
Scarborough • **647-846-7004**  
**ChartwellGuildwood.ca**

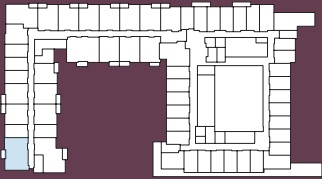
## 2 bedrooms - Type A - BF

**Unit 2B-A-BF**  
958 sq ft

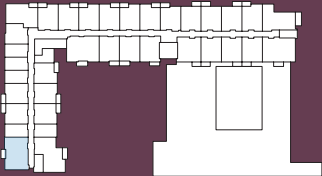
Unit numbers  
110, 210, 310, 410



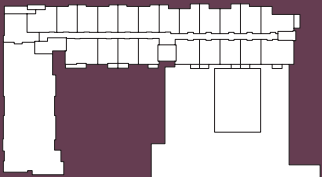
Main Floor



2nd Floor



3rd & 4th Floor



5th Floor



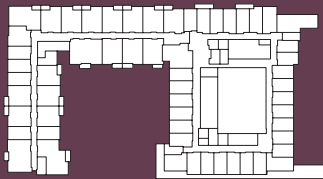
↑  
ENTRANCE

Prices, materials, areas and dimensions are approximate and may change without notice. If applicable, area and location of balconies/terraces may be changed, varied or mirrored from one floor to another. Furniture is shown for illustrative purposes only. Gross unit area is obtained by including exterior walls as well as half of both demising and corridor walls.

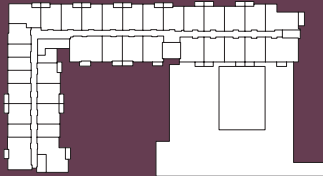
## 2 bedrooms - Type B



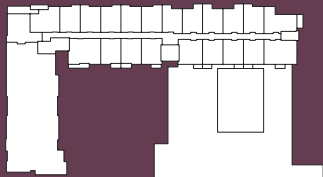
Main Floor



2nd Floor



3rd & 4th Floor



5th Floor



↑  
ENTRANCE

Prices, materials, areas and dimensions are approximate and may change without notice. If applicable, area and location of balconies/terraces may be changed, varied or mirrored from one floor to another. Furniture is shown for illustrative purposes only. Gross unit area is obtained by including exterior walls as well as half of both demising and corridor walls.

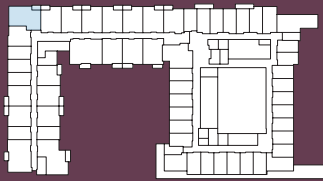
**Unit 2B-B**  
1013 sq ft

Unit numbers  
109

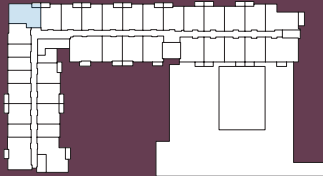
## 2 bedrooms - Type C



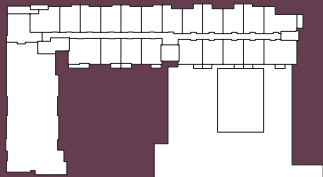
Main Floor



2nd Floor



3rd & 4th Floor



5th Floor



↑  
ENTRANCE

Prices, materials, areas and dimensions are approximate and may change without notice. If applicable, area and location of balconies/terraces may be changed, varied or mirrored from one floor to another. Furniture is shown for illustrative purposes only. Gross unit area is obtained by including exterior walls as well as half of both demising and corridor walls.

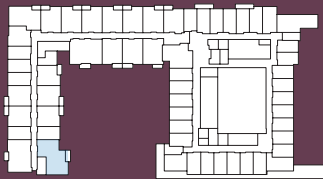
**Unit 2B-C**  
844 sq ft

Unit numbers  
118, 218, 318, 418

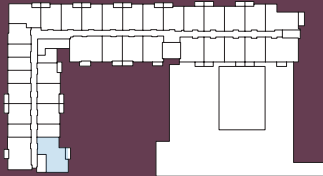
## 2 bedrooms - Type D



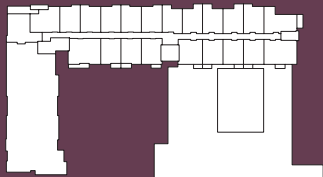
Main Floor



2nd Floor



3rd & 4th Floor



5th Floor



↑  
ENTRANCE

Prices, materials, areas and dimensions are approximate and may change without notice. If applicable, area and location of balconies/terraces may be changed, varied or mirrored from one floor to another. Furniture is shown for illustrative purposes only. Gross unit area is obtained by including exterior walls as well as half of both demising and corridor walls.

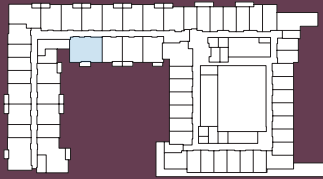
**Unit 2B-D**  
1028 sq ft

Unit numbers  
209, 309, 409

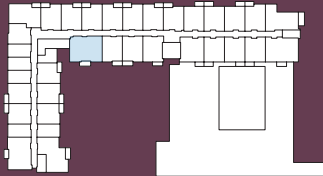
## 2 bedrooms - Type E



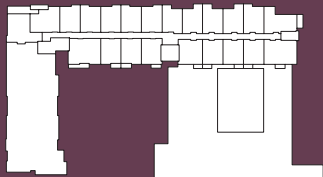
Main Floor



2nd Floor



3rd & 4th Floor



5th Floor



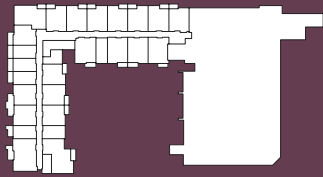
↑  
ENTRANCE

Prices, materials, areas and dimensions are approximate and may change without notice. If applicable, area and location of balconies/terraces may be changed, varied or mirrored from one floor to another. Furniture is shown for illustrative purposes only. Gross unit area is obtained by including exterior walls as well as half of both demising and corridor walls.

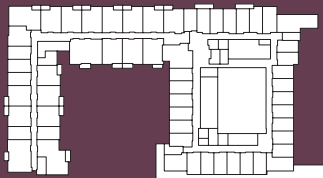
**Unit 2B-E**  
1046 sq ft

Unit numbers  
204, 304, 404

## 2 bedrooms - Type F



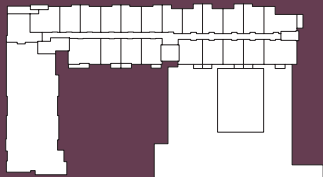
Main Floor



2nd Floor



3rd & 4th Floor



5th Floor



↑  
ENTRANCE

Prices, materials, areas and dimensions are approximate and may change without notice. If applicable, area and location of balconies/terraces may be changed, varied or mirrored from one floor to another. Furniture is shown for illustrative purposes only. Gross unit area is obtained by including exterior walls as well as half of both demising and corridor walls.

**Unit 2B-F**  
1036 sq ft

Unit numbers  
331, 431

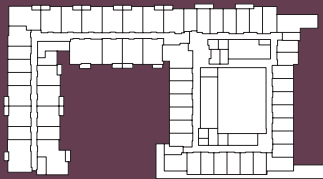
## 2 bedrooms - Type E Prestige

Unit 2B-E-FK  
1046 sq ft

Unit numbers  
504



Main Floor



2nd Floor



3rd & 4th Floor



5th Floor



↑  
ENTRANCE

Prices, materials, areas and dimensions are approximate and may change without notice. If applicable, area and location of balconies/terraces may be changed, varied or mirrored from one floor to another. Furniture is shown for illustrative purposes only. Gross unit area is obtained by including exterior walls as well as half of both demising and corridor walls.